

Eagle View offers luxury one, two, three bedroom apartments, three and four bedroom townhomes in a gated community overlooking the beautiful West Virginia State Capitol and West Virginia's majestic mountains. Whether you're an outdoor enthusiast, busy professional or empty nester, Eagle View has something to fit your lifestyle! As added features we are a pet friendly community and also offer short term, corporate/executive leasing which sets us aside from our competitors.



COME HOME TO EAGLE VIEW AND ELEVATE YOUR WAY OF LIVING!

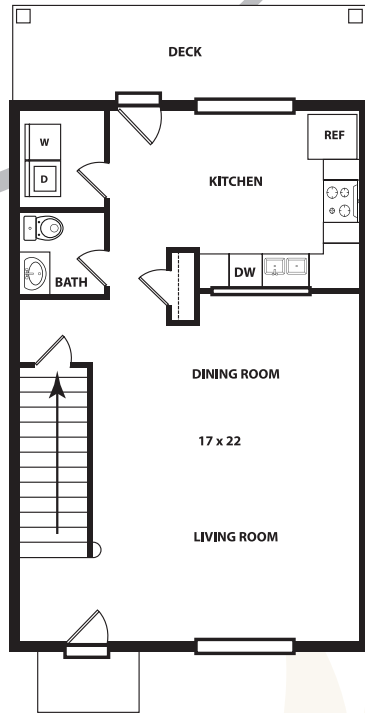
The views are unparalleled as are the amenities, which consist of:

- 24 Hour Fitness Center
- Hiking Trails
- Grill Stations
- Fire Pits
- Hot Tub (Seasonal)
- Playground
- Turf Pet Park with Agility Toys
- Pavilion and Observation Deck
- 24-Hour Emergency Maintenance
- In-House Snow Removal
- Onsite Restaurant
- Two Pools (Infinity/Waterfall Pool-Seasonal)
- 2 Half Basketball Courts (Versa Court technology)

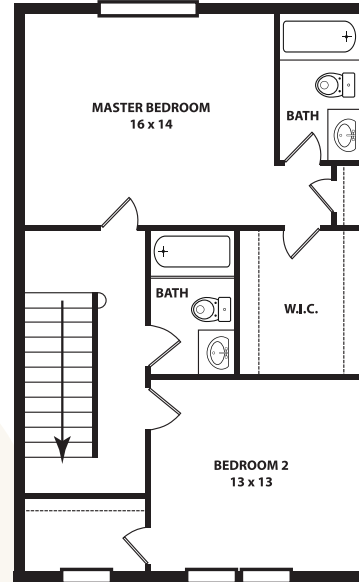


The information contained within as well as the features and amenities described and depicted herein are based upon current development plans, which are subject to change without notice. Therefore, there is no guarantee that the features, amenities and facilities depicted will be built as described. This is for illustrative purposes only and accuracy is not guaranteed. 03/01/2018 | DEVELOPED BY: AB CONTRACTING, INC.

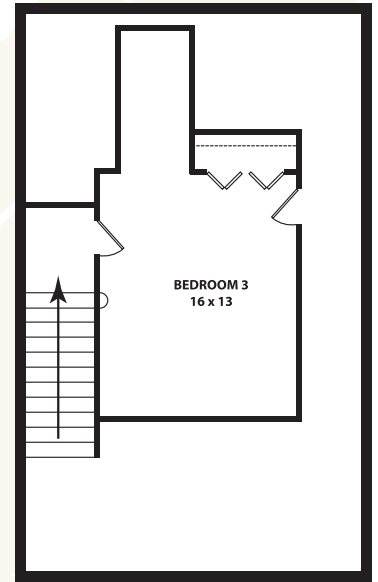
3 BEDROOM



FIRST FLOOR

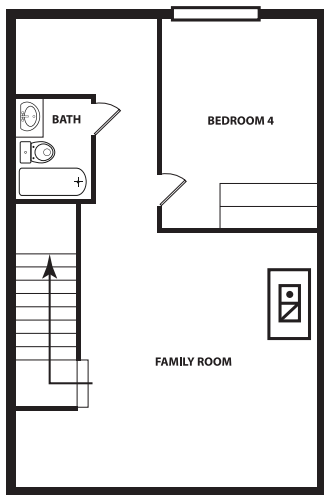


SECOND FLOOR

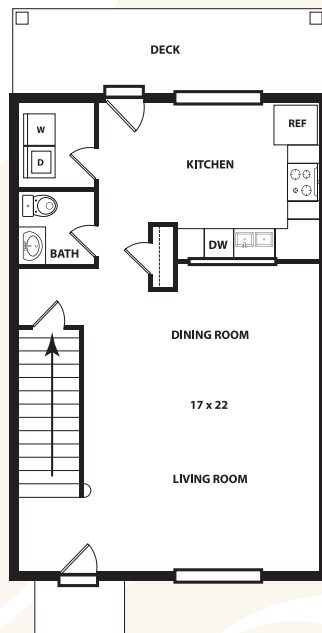


ATTIC PLAN

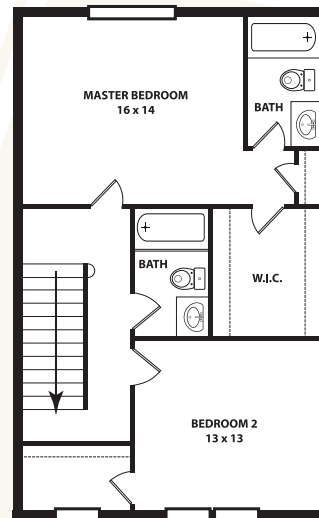
4 BEDROOM



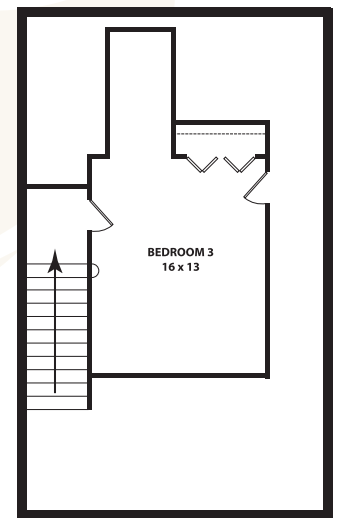
BASEMENT



FIRST FLOOR



SECOND FLOOR



ATTIC PLAN

- 3/4 bedroom
- Private deck
- Open floor plan
- 2.5/3.5 bath
- Washer/dryer hookup
- 2000-2586 sq. ft.